



DISCOVERY SERIES™  
**Plate Loaded Line**



# DPL561

Leg Curl

The Discovery Series combines all the functional performance elements demanded from a strength line but with the design and attention to detail you would expect from Precor. The result is an exceptional workout experience for the first-time user or seasoned athlete.

At Precor, we recognize that a great workout is the sum of many parts. In your hands, the products, services and technologies we offer can be combined in countless ways to complement the programs and atmosphere you're creating.

**PRECOR®**

# DPL561

## Leg Curl

DISCOVERY SERIES™  
Plate Loaded Line



See it in action at [precor.com/discovery](http://precor.com/discovery)

[www.precor.com/VPL11](http://www.precor.com/VPL11)

The innovative, adjustment-free design of the Discovery Series Plate Loaded Line Leg Curl allows the user to easily move from right to left leg without any adjustments. The kneeling configuration creates a superior movement with smooth feel and excellent muscle contraction.

### PRODUCT HIGHLIGHTS

#### 1 Instructional Placards

Improve every workout with easy-to-understand, large text-free illustrations that demonstrate correct form at a glance. Users will love the QR codes and URL that provide smart phone links to helpful 30-second instructional videos.

#### 2 Delivers More Effective Workouts

Designed to demand greater balance and core muscle engagement, the independent arm resistance, converging and diverging movement paths provide a greater range of motion.

#### 3 Upholstery

Exercisers will be more comfortable thanks to the premium pads and upholstery—and you'll appreciate the enhanced performance of more durable materials.

### PRODUCT SPECIFICATIONS

**Dimensions (L x W x H):** 48 x 66 x 55 in / 122 x 167 x 140 cm

**Product Weight:** 331 lbs / 150 kg

**Starting Weight:** 11 lbs / 5 kg

**Max Load Weight:** 180 lbs / 82 kg

**Storage Weight Pins** N/A

**Accessories:** Rubber feet

**Frame and Finish:** Oversized 4x2-inch frames are 11 and 8-gauge steel and welded in all structural areas. Powder coated frames.

**Upholstery:** Premium quality upholstery with Beautyguard protective topcoat finish. Double stitching on all seams.

**Warranty:** Frame - 10 years  
Parts (Mechanical) - 5 years  
Wear Items - 6 months  
Other\* - 1 year  
Labor - 1 year

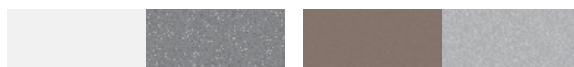
\*including Hand Grips, End Caps, Cables, Selector Pins, Shrouts

#### Standard Color Options

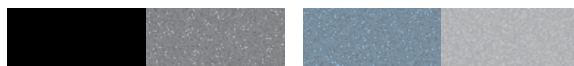
Frame Movement Arms Frame Movement Arms



Gloss Metallic Silver Metallic Ash Metallic Ash Gloss Metallic Silver



Gloss White Metallic Ash Desert Bronze Gloss Metallic Silver



Black Magic Gloss Metallic Ash Ocean Blue\* Gloss Metallic Silver

#### Upholstery



Black Mahogany Imperial Blue Paprika Graphite



Royal Blue Slate American Beauty Red Terra Cotta Black with LED Blue Stitching\*

\*The Precor signature color option is available at an additional cost.

• Colors may vary.

• Custom colors available. Please contact a Precor Sales Representative.

